

GEMCOM CUSTOMER STORY

Supporting a global customer base with a Gemcom mine design, planning, and scheduling solution

Python Mining Consultants is a Canadian-based firm specialising in mine design, planning, and scheduling. They work with North American and global companies of all types and sizes to produce long- and short-term schedules for surface and underground mining operations. With a wide variety of different project types and customers, working with software from the largest global supplier of mining productivity solutions is a major advantage for them.

“We chose Gemcom’s Surpac and MineSched solution due to its widespread use in the mining industry and for the ease of data movement between the two applications. Further, having all aspects of the design process in one solution allows changes to any one part quickly and easily,” says Martin Drennan, Technical Consultant, Python Mining Consultants.

Python Mining Consultants find Gemcom’s software particularly helpful in many aspects of the technical reports they produce, using the data generated in Surpac and MineSched for scoping, pre-feasibility, and feasibility studies. A typical project will start with drillhole data being imported into Surpac, which they use to create a block model using the software’s geostatistics and block modelling features. This block model can be

used along with costing data from the mine site to create economic stope models.

Next, the mine is designed around the stopes using Surpac’s modelling tools and then scheduled using MineSched. “The schedule can be run using different scenarios to find a near optimal solution. Once the schedule is completed, outputs of data are created by MineSched for use in the final technical report. MineSched has enabled us to accomplish development and production scheduling faster and with greater ability to run sensitivities on different options,” comments Drennan.

“An additional benefit of Gemcom’s software is how it helps us in solving optimisation problems by creating various design options and running many scheduling scenarios quickly. By using standard financial analysis in a MineSched template, it is possible to quickly run multiple options and see the resulting economic values. Similarly, scheduling issues can be dealt with by looking at several competing designs and performing various rate sensitivities on them,” he adds.

“Automation of tasks and workflows is another aspect of Gemcom’s software that we appreciate. One of the most useful features of Surpac is the ability to create custom macros to automate many processes,” concludes Drennan.



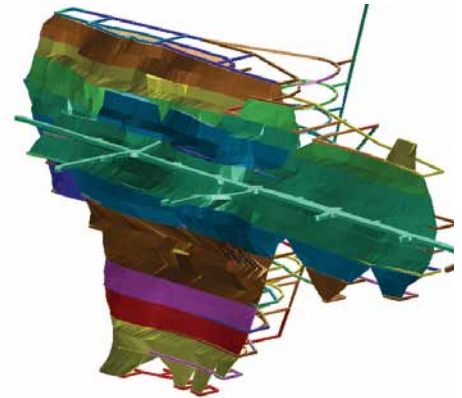
About Python Mining Consultants

Headquarters: Hamilton, Canada

Python Mining Consultants provides all the engineering services necessary to perform basic scoping studies, to full feasibility work, and everything in between.

Web site:

www.pythonminingconsultants.ca



Stopes and development for an underground gold project.

For more information email info@gemcomsoftware.com or visit www.gemcomsoftware.com.

Disclaimer and copyrights

This document gives only a general description of products and services and except where expressly provided otherwise shall not form part of any contract. Changes may be made in products or services at any time without notice. Copyright 2011, Gemcom Software International Inc. Gemcom, the Gemcom logo, combinations thereof, and Surpac, and MineSched are trademarks of Gemcom Software International Inc. All other names are trademarks, registered trademarks, or service marks of their respective owners.