

GEMCOM CUSTOMER STORY

Vision of improved competitiveness achieved by China's Shougang Mining Company with Gemcom Surpac™

In China, the utilisation of mining productivity software is moving into the mainstream as the industry in the country sees examples of the value they deliver. In 2004, Shougang Mining Company, an iron ore producer based in Beijing seeking to be at the forefront of the use of technology in mining, took the lead in the adoption of such solutions. Their aim was to boost their competitiveness and increase efficiency by improving the technical capabilities of their employees through the replacement of manual geology and mine planning methods as part of its "Digital Mine Project".

Needing easy-to-use, Chinese-language software that first-time users could learn quickly, along with user support in their native-tongue, Shougang turned to Gemcom and its Surpac software. Since adopting the software, Shougang has used Surpac daily in geology, mine planning, design, survey, and production.

"I can clearly see the positive results from the implementation of Surpac as part of our Digital Mine Project. The Surpac initiative has significantly altered the traditional manual mining work methods, raising the level of technology that has been employed by industry in China to new heights. The work quality and work rate within the professional technical teams has certainly been advanced," says Ms. Sun, Director of the Chief

Engineer's Department, Shougang Mining Company.

Mao Qing Hua, Mining Engineer and Geological Specialist adds: "The implementation of Surpac has resulted in invaluable interactive technical communications between our geologists, surveyors and engineers. The visualisation of the mine designs in Surpac, as an example, has allowed for more efficient and practical work."

Another way in which Surpac has aided the organisation's efficiency is through improvements made possible by the software's ability to automate routine user tasks and mine planning workflows. These automated processes were developed to support the specific needs of the company in conjunction with local Gemcom services and support. The result has been a significant increase in workforce efficiency.

"Resource and grade calculations, especially for large areas and/or multiple constraints, can now be completed by Shougang technical personnel in just a few minutes, compared with hours or even days previously and with higher accuracy. In another example, an optimisation task that used to take one person several months can now be done in just 10 minutes, as long as technical and economic parameters are selected," concludes Ms. Sun.



About Shougang Mining Company

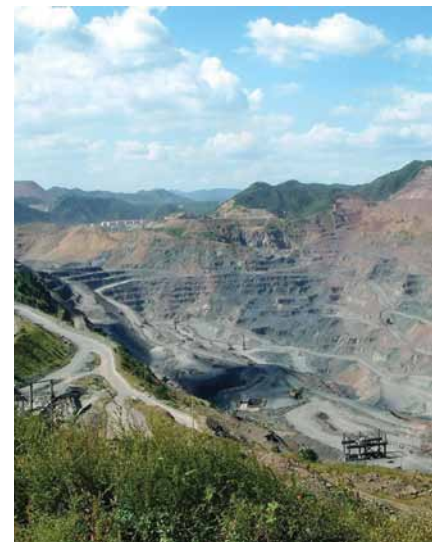
Headquarters: Beijing, China

ASX Symbol: MRE

Shougang Mining Company is part of the Shougang Group, one of China's largest steel makers.

Shougang Group subsidiaries are listed on the Shenzhen and Hong Kong stock exchanges.

Website: www.shougang.com.cn



For more information email info@gemcomsoftware.com or visit www.gemcomsoftware.com.

Disclaimer and copyrights

This document gives only a general description of products and services and except where expressly provided otherwise shall not form part of any contract. Changes may be made in products or services at any time without notice. Copyright 2011, Gemcom Software International Inc. Gemcom, the Gemcom logo, combinations thereof, and Surpac are trademarks of Gemcom Software International Inc. All other names are trademarks, registered trademarks, or service marks of their respective owners.