



## XPLORPAC – Geological Database and Visualisation System

Gemcom Surpac Xplorpac Edition is a flexible suite of 3D visualisation and modelling tools for integrating and presenting geological information. With Xplorpac, users experience ease of management for drillhole data, surface samples, geochemistry and geophysical information. Using open database technology, Xplorpac allows users to connect to an existing database or create a new one.

Geoscientists looking for an easily integrated software tool choose Xplorpac because it allows them to visualise a wide range of raw data formats and then create maps, sections, models and volume estimations. Data relationships may be complex, but 3D display helps to effectively communicate targeting concepts to management.

### Output Display Options

Xplorpac offers a fully integrated 3D graphics window with multiple layer control and view ports. Standard data display options include contouring,

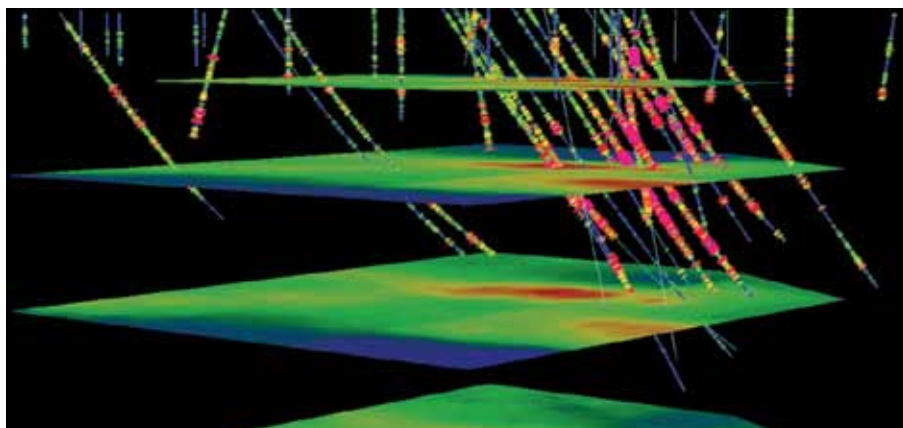
colour shading, plan view maps and cross-sections at any orientation. Xplorpac has an AutoPlot function, a full range of custom plotting tools and can generate graphical core log reports, maps and sections in professional hard copy. Users may include geological symbols, legends, title blocks and corporate logos. Xplorpac allows presentation of valuable exploration data, including 3D image capture, aerial photograph draping and animated flyovers. Users can also transfer images with ease to other packages for web site publishing or slide show presentations.

### Data Analysis and Interpretation

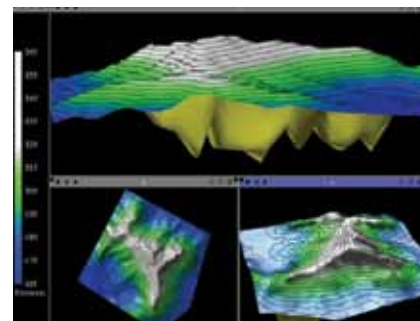
Xplorpac comes with a full range of analytical and modelling tools including digital terrain modelling (DTM) for constructing physical surfaces such as topography, faults or geologic contacts. Surfaces may be contoured, colour shaded and sliced in any orientation. Grid modelling and interpolation options can be used for normalising

data distribution. A geologist may gain greater perspective by draping a geochemical signature over a surface DTM.

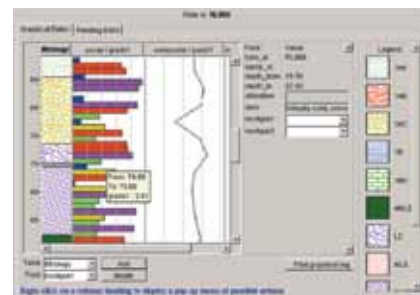
Viewing drillhole data for the entire trace of a hole is a core function of the 3D visualisation window. The user controls which important fields to display, such as lithology, alteration or assay results. Solid modelling (or wireframing) is a powerful way to define the ore zone's 3D spatial extent and the way it interacts with other objects. Xplorpac goes the extra step by including several volume calculation tools, such as a polygonal reserves method, volumes between surfaces and within defined areas.



Drillholes and induced polarization (IP) chargeability plans at Oyu Tolgoi Project. Image courtesy of Ivanhoe Mines Ltd.



Xplorpac user interface showing multiple viewports of surface topography, contours and an ore body model.



Graphical interface to individual drillhole data showing legend, patterns and graphs.



## Reporting

Xplorpac accepts data in many formats, including the ability to link into existing Microsoft Access, Oracle and Microsoft SQL Server databases (and other ODBC compliant types) so that visualisation can begin immediately. Files from MapInfo, MicroStation and AutoCAD are also supported. Database management tools allow the user to create and delete databases, load and unload text data and check the integrity of the data in a database. A variety of interactive drillhole functions allow the user to extract data for visualisation and plotting. The interactive compositing functions allow the user to display, edit and report composited values for multiple intervals down a number of drillholes. Multiple plans and sections can easily be extracted for viewing and plotting. Statistical and mathematical functions can be performed on nominated fields and a number of automated reporting functions are included.

## Surpac Xplorpac Edition Modules

CORE FEATURES AND FUNCTIONALITY	
<b>3D Graphics Display</b>	Sophisticated and powerful 3D modelling environment.
<b>Plotting</b>	Create, preview, annotate and print user-defined plots.
<b>CAD Tools</b>	Create and work with point and line data.
<b>Wireframe (DTM) Tools</b>	Create and work with wireframe surfaces and sub-surfaces.
<b>Geological Drillhole Database</b>	Manage, query and display drillhole and assay information.
<b>Basic Statistics</b>	Tools for general data analysis, min, max, mean.
<b>Scripting and Automation</b>	Record / playback macros and write custom workflows.
<b>Language Support</b>	English, Chinese, Russian, Spanish, French and German.
<b>Online Help / Tutorials</b>	Documentation, examples, tutorials and data.

OPTIONAL MODULES	
<b>Autoplot</b>	Quick plots to scale with basic user-defined options.
<b>Geostatistics</b>	Tools for trend analysis, variogram modelling and validation.
<b>Solids Modelling</b>	Create wireframes of geological features and underground workings.
<b>Data Plug-ins</b>	Read and exchange data with multiple geoscience applications.
<b>Network Licence Manager</b>	Share and manage licenses across the network.

For more information email [surpac@gemcomsoftware.com](mailto:surpac@gemcomsoftware.com) or visit [www.gemcomsoftware.com/surpac](http://www.gemcomsoftware.com/surpac).

### Gemcom Services

When you don't have the time or in-house resources available, Gemcom can assist you with your geology, engineering and operations needs. Our global team of Engineers, Geologists, Surveyors, Metallurgists and Chemists have local language and regional expertise. We can provide you with knowledge and tools that enable you to increase operational and personal productivity. Typical assignments include data management, geological modelling, resource estimation, design and optimisation, strategic mine planning, scheduling, survey, grade control, blast design, reconciliation, workflow automation, system configuration, training and points in between. Learn more: [www.gemcomsoftware.com/services](http://www.gemcomsoftware.com/services).

#### Disclaimer and copyrights

This document gives only a general description of products and services and except where expressly provided otherwise shall not form part of any contract. Changes may be made in products or services at any time without notice. Copyright 2011, Gemcom Software International Inc. Gemcom, the Gemcom logo, combinations thereof, and Surpac are trademarks of Gemcom Software International Inc. All other names are trademarks, registered trademarks, or service marks of their respective owners.